

San Bernardino  
County Museum

# Field Trip Guide & School Visits

*One of the best museums I have been to.  
Everything was up close and provided great  
information that was interesting and  
comprehensive compared to other museums.*



2025-2026

# A Field Trip to Remember!

Museum exhibits & programs are designed to support the California Common Core State Standards (CCSS) through dramatic play, investigation, and hands-on activities!

The San Bernardino County Museum (SBCM) system is committed to serving all students in our region by supplementing classroom learning with engaging interactive exhibits. SBCM administers seven (7) sites throughout San Bernardino County, three of which are available for field trips! The San Bernardino County Museum in Redlands, the Victor Valley Museum (VVM) in Apple Valley, and the historic María Merced Williams and John Rains House (MMWJR) in Rancho Cucamonga offer self-guided and guided field trips for students of all ages.

The museums and historic home offer a variety of core exhibits that focus on areas of regional history, biodiversity, anthropology, and Earth sciences that inspire creativity, generate inquiry, and cultivate knowledge. Field trips and school visits can be booked Tuesday through Friday through our online field trip reservation system.

**Call us for information to prepare you for your field trip or school visit! (909) 798-8610**

Explore  
**25+**  
interactive  
exhibits and  
several gardens.

For information about  
field trips and school tours,  
scan the QR code.



# Reservations & Scheduling

## Reservations

Reservations are available through our online booking system. Scan the QR code to book your field trip today!



## Trip Scheduling

At SBCM, field trips can be scheduled Tuesday-Friday from 9 a.m. - 3 p.m. on a space-available basis. At VVM, field trips can be scheduled Tuesday-Friday from 10 a.m. - 2 p.m. At MMWJR, field trips can be scheduled Thursday-Friday from 10 a.m. - 2 p.m. During peak field trip season (March-June) dates often fill a month or more in advance.

## Trip Confirmation

After booking through our online portal, you will be issued a receipt of confirmation and an invoice for payment from SBCM's fiscal team. Before you visit, you will receive a confirmation letter that includes museum and parking information.

## Length of Visit

Field trips and school visits are designed to last 2-4 hours.

# Trip Planning



## Accessibility

All areas of the museums and historic site are accessible. Aides of people with disabilities are admitted free.

## Adult Chaperones

One adult chaperone is required for every ten students. Chaperones are expected to actively supervise students, including refraining from cell phone usage during the visit. Children are required to maintain safe behavior and appropriate language. All guests should wear attire appropriate for a family venue.

## Museum Gift Store

Our museum gift stores have exciting products that reinforce educational concepts in our exhibits. Students are welcome to shop but must be supervised by an adult. We allow one group in the gift store at a time (approximately 10 students to 1 adult). If a field trip group is larger than 50, groups will be timed to 5 minutes for each group to ensure that every student has an opportunity to visit. Teachers are encouraged to notify SBCM staff prior to their visit if they wish to allow their students to shop in the gift store.

## \*Please Note

Remind students that all purchases made in the gift store will include California sales tax.

## Field Trips & School Visits at the Museums and Historic Site

### Admission

Minimum of 10 visitors required for group rate. One adult required for every 10 students.

San Bernardino County Museum  
Victor Valley Museum  
María Merced Williams and John Rains House

\$4/student  
\$5/adult

### Payment Information

Payment can be made at the time of your reservation. Full payment is required at least two weeks prior to your visit. Once confirmed by our staff, our fiscal team will send an invoice for your school to submit a PO/check.

Payments can also be made online through your personal Doubleknot portal or by mail with check made out to: San Bernardino County Museum, 2024 Orange Tree Lane, Redlands, CA 92374.

If you must pay the day of, please notify your Field Trip coordinator, Erica Watkins at [erica.watkins@sbcm.sbcounty.gov](mailto:erica.watkins@sbcm.sbcounty.gov) so we can accommodate you.

### Cancellations

Should your group need to cancel your visit to either SBCM, VVM, or MMWJR, we ask notice of cancellation two weeks prior to your scheduled field trip. If cancelled without notice or past the deadline for payment, your group is expected to either reschedule your visit to a later date or pay half of your initial invoice.

### \*Please Note

Museum memberships and passes are **NOT** valid for field trips or school visits.

We can't honor museum memberships or passes to cover the cost of your students because group visits are already discounted and groups require increased museum staffing.

# Before Your Visit

The San Bernardino County Museum (SBCM) system is excited to be your field trip choice. We understand that for many students, SBCM, VVM, or MMWJH are often their first museum experience. Help us prepare your students by going over these guidelines.

## For Teachers

1. Please be prepared with your students grouped in smaller groups ahead of time. We suggest a ratio of ten (10) students to one (1) adult minimum! More chaperones are always encouraged.
2. Inform your chaperones of their responsibility! Chaperones are expected to ensure that your students engage with the museums and historic site safely both for the safety of the student and for the safety of our collections. Therefore, please discourage the use of cellphones during your visit.
3. Lunches are not allowed in the museums and historic site. Be prepared to have a place to store lunches during your visit such as on the bus or in backpacks.
4. Your group is welcome to stay as long as you would like. We generally find that two (2) hours is the perfect amount of time for a visit.
5. Our museums and historic site have ramps, stairs, and elevators available for students who require accommodation.
6. At SBCM, *Exploration Station: A STEAM Lab for Kids* is not included with field trips at this time and will not be accessible to your group during your visit.

## Museum Manners for Students

1. Students must always stay with their group while exploring the museum.
2. When in the museums and historic site, we must walk at all times and speak at indoor volumes.
3. Food and drinks, except for water, are not allowed inside the museums and historic site. Snacks and crumbs can attract pests like bugs and rodents which would threaten the safety of our one-of-a-kind collections!
4. There are many things to touch in the museums and historic site! Some touching is allowed on objects that are obvious. However, if it is far out of reach or behind glass, please help us preserve these objects by not touching artifacts.

# During Your Visit

## Arrival

Your visit will begin with museum staff or volunteers greeting you and your students as you step off the bus. Museum staff or volunteer(s) will gather all your students to address the guidelines listed under "Museum Manners for Students." At SBCM, museum staff will separate your student groups into different spaces in the museum. From there your groups will navigate the museum on their own as a self-guided experience. At VVM and MMWJR, museum staff or volunteers will guide your students into different spaces in the museum or historic site.

## Parking

At SBCM, bus parking is available across the parking lot to the East of the museum entrance, near our Orange Grove kiosk. At VVM, bus parking is available across the parking lot to the East of the museum entrance. At MMWJR, bus parking is available across the parking lot to the West of the house entrance.

## Lunch (30 minutes per class)

SBCM has four spaces available for lunch with varying capacities. The main spaces for lunch are in the front courtyard near our cactus garden and our back courtyard near the train exhibit. Alternative spaces for lunch include our Amphitheater and our orange grove across the parking lot. At VVM, lunch may be eaten outside in their rock garden under the gazebo or at any of their picnic tables. At MMWJR, lunch may be eaten outside in the garden under the trees at any of the picnic tables.

### \*Please Note

In the case of inclement weather, alternative indoor spaces will be provided for your students and coordinated the day of your field trip.



# San Bernardino County Museum Galleries

The San Bernardino County Museum offers a variety of core exhibits that focus on areas of regional history, biodiversity, anthropology, and Earth sciences that inspire creativity, generate inquiry, and cultivate knowledge. Schedule your field trip today!



## Path of the Mastodon: Death to Discovery

Often confused with mammoths, mastodons are actually a distinct and separate group of extinct animal, though they share similar characteristics.



## Remember Ramps

*Remember Ramps* include displays and hands-on, interactive examples of household and office items from the past several decades.



## Pulp Culture: A Juicy Tale of the Orange Empire

This is a captivating, bilingual journey through one of the most fascinating periods of our history, starting in the 19th century and continuing to the present day.



## Sculpted by Time: Our Mountains, Faults, Lakes, and Caves

highlights the dynamic geological and paleontological history in San Bernardino County and inland Southern California.



## Minerals Rock: Unearthing the Human Element

*Minerals Rock! Unearthing the Human Element* highlights the importance of minerals in our everyday lives.



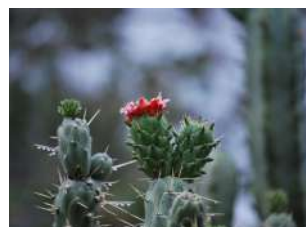
## Outdoor Courtyard

The Outdoor Courtyard showcases our mining, lumbering, railroad, and petrified wood exhibits.



## Inspired by Nature: Why Preservation Matters in Our Modern World

This exhibit focuses on three areas: birds of our region, biomimicry objects inspired by nature, and caring for our collections.



## Desert Garden

Explore our desert gardens to learn about desert plants and learn how human actions continue to shape this ecosystem.



## Sacred Earth

*Sacred Earth* presents extraordinary local artifacts and tells the stories of the Serrano, Cahuilla, and Chemehuevi people.



## Ethnobotany Garden

Learn that our relationship to the land is symbiotic, and our health is integrally tied to the health of the land, whether it's physically, emotionally, or spiritually.

# Victor Valley Museum Galleries

The Victor Valley Museum offers a variety of exhibits that highlight the cultural and natural heritage of the High Desert. Marvel at the local archaeology, anthropology history, and traces of the plants and animals that once inhabited our region. Schedule your field trip today!



## Mosaics of the Mojave: Life, Culture, and Ecology in the Mojave Desert

This interactive exhibit features a walk-through cave dwelling, close encounters with desert creatures, and the opportunity for visitors to design their own rock art.



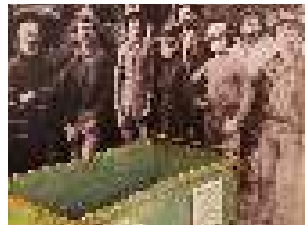
## Military in the Mojave: A Commanding Presence in the Victor Valley

Explore the history of the U.S. Armed Forces in the High Desert and the culture that they created.



## Minerals in the Mojave

Learn about the wide variety of minerals found in the Mojave Desert: how to identify them and how they're used in everyday life. Visitors can look at minerals under a microscope or witness how certain minerals glow under UV light.



## Mining in the Mojave

*Mining in the Mojave* exhibit highlights the mining operations that took place in California in the 1850s.



## History and Community of the High Desert

*History and Community of the High Desert* exhibit tells the story of the High Desert's past and the residents who shaped it.



## Paleontology

Featured specimens include the Victorville Mammoth which is showcased in its most complete specimen of its genus known from the Mojave Desert.



## Desert Garden

Explore our desert garden to learn about high desert plants and learn how human actions continue to shape this ecosystem.



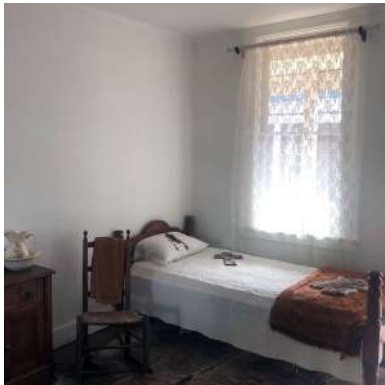
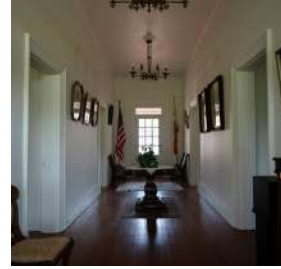
## Directions to Victor Valley Museum!

From I-215, take exit Bear Valley Rd. towards Apple Valley. Victor Valley Museum is located on Apple Valley Rd.

11873 Apple Valley Rd., Apple Valley, CA  
(760) 995-8770  
[museum.sbcounty.gov](http://museum.sbcounty.gov)

# María Merced Williams and John Rains House

The María Merced Williams and John Rains House offers a colorful history of the Cucamonga Rancho. In 1839, the Mexican governor of California granted the 13,000-acre rancho to Tiburcio Tapia who established possibly the earliest commercial winery in the state. Schedule your tour today!



## Directions to María Merced Williams and John Rains House!

From I-10, take exit Foothill Blvd. towards Rancho Cucamonga. María Merced Williams and John Rains House is located on Hemlock St.

8810 Hemlock St., Rancho Cucamonga, CA  
(909) 798-8608  
[museum.sbcounty.gov](http://museum.sbcounty.gov)

**Educator  
Night Out!**

**Be on the look  
out for this event!**



## Top reasons to choose SBCM for a Field Trip or School Visit

✓ SBCM is consistently voted  
“Best Museum” and “Best Day Trip.”

✓ Interactive exhibits make learning  
exciting, engaging, and fun!

✓ Field trips support state learning  
standards in science, language arts,  
mathematics, and visual arts.



### Directions to San Bernardino County Museum!

From I-10, take exit California towards  
Redlands. San Bernardino County Museum  
is located on Orange Tree Ln.

2024 Orange Tree Ln., Redlands, CA  
(909) 798-8608  
[museum.sbcounty.gov](http://museum.sbcounty.gov)

### Field Trip Questions?

Phone

(909) 798-8610

Email

[Erica.Watkins@sbcm.sbcounty.gov](mailto:Erica.Watkins@sbcm.sbcounty.gov)